

ARDEX SD-T®

Self-Drying, Self-Leveling Concrete Topping

Provide a hard, flat, smooth surface for warehouses, utility rooms and light manufacturing. Add color as part of ARDEX Designer Floors™.

Install over: concrete and non-absorbent substrates such as terrazzo, ceramic and stone tiles*

Key Features

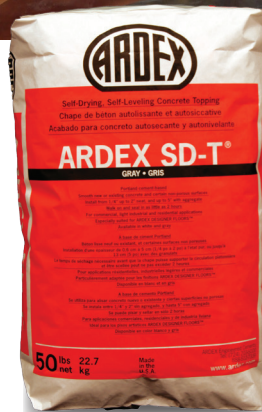
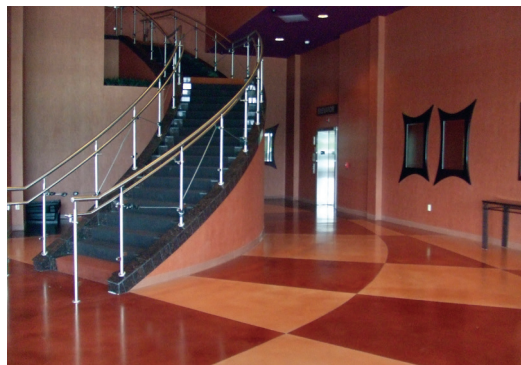
- Self-Drying Technology
- Portland cement
- Pourable and pumpable
- Interior use
- Available in gray or white

Installation

- **General priming recommendations:**
 - *ARDEX Designer Floors™ require priming with ARDEX EP 2000™ Substrate Preparation Epoxy
 - Non-designer installations use ARDEX P 51™ Primer 3:1 follow by 1:1 with water
 - See the Technical Brochure for details
- **Packaging:** 50 lb (22.7 kg)
- **Coverage:** 25 sq. ft. per bag at 1/4" (2.3 m² at 6 mm)
- **Thickness:**
 - Neat: 1/4" to 2" (6 mm to 5 cm)
 - Aggregate: Up to 5" (12 cm)
- **Flow time:** 10 minutes
- **Walkable:** 2 to 3 hours
- **Seal:**
 - Waterborne sealer: when hard- as little as 2 hours
 - Solvent-borne and high solids (less than 20 mils/0.5 mm): 24 hours
 - High build polymer coating (greater than 20 mils/0.5 mm): 3 to 5 days

Performance

- **ASTM C191 Initial Set:** Approx. 10 minutes
- **ASTM C191 Final Set:** Approx. 45 minutes
- **ASTM C109 mod (air cure only) Compressive Strength:** 6100 psi at 28 days (427 kg/cm²)
- **ASTM C348 Flexural Strength:** 1200 psi at 28 days (84 kg/cm²)
- **VOC:** 0



ARDEX DESIGNER FLOORS™



AMERICAS

888-512-7339

+1-724-203-5000

www.ardexamericas.com

AF125 11/14